



# JOINT

MORTAR-GROUTED JOINT

# BOLTOPS

FOR REBAR TYPE - SS560:2016 Gr. 500&600 SIZE 20~40

BOLTOPS is a mortar-grouted joint, able to join any types of rebar. BOLTPOS perfectly suits for both prefabrication and precast methods, and even for conventional method.

The bar stopper inside joint is option to be chosen, depending on construction conditions.

It also conforms to ISO15835.



## Features

1. Able to join any types of rebar
2. Suitable for prefabrication and precast methods
3. Able to absorb mismatch or length error of rebar



**PRECAST METHOD(BEAM)**



**PREFABRICATION METHOD(COLUMN)**



**TTK MORTAR & CONSTRUCTION TOOLS**

# MORTAR-GROUTED JOINT BOLTOPS

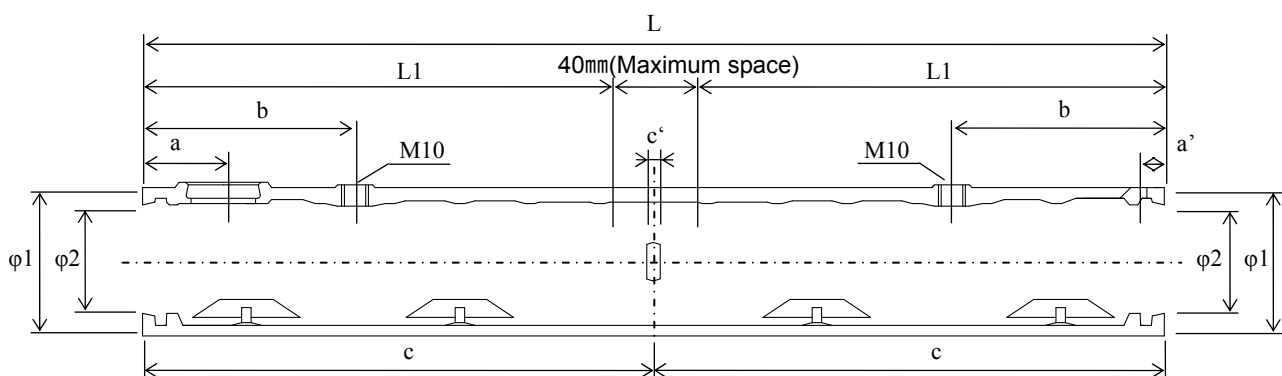
## ■ Mechanical Properties

| Model     | Standard   | Grade         | 0.2%Proof Stress<br>(N/mm <sup>2</sup> )<br>min | Tensile Strength<br>(N/mm <sup>2</sup> )<br>min | Elongation<br>(%)<br>min | Hardness<br>(HB) |
|-----------|------------|---------------|---|---|--------------------------|------------------|
| #6~#8     | BS EN 1564 | EN-GLS-800-2  | 480<br>and over                                 | 800<br>and over                                 | 2<br>and over            | 248-352          |
| #9~#13/14 |            | EN-GLS-1200-2 | 850<br>and over                                 | 1200<br>and over                                | 2<br>and over            | 340-440          |

## ■ Dimensions & Mortar Injection Volume

(Unit:mm)

| Model  | Bar Size | Length<br>(L) | Outer Dia-<br>meter<br>(φ1) | Inner Dia-<br>meter<br>(φ2) | Mortar Inlet    |                     | Mortar Outlet    |                      | Bolt            |      | Bar Stopper     |               | Minimum<br>inserted<br>length of<br>rebar |
|--------|----------|---------------|-----------------------------|-----------------------------|-----------------|---------------------|------------------|----------------------|-----------------|------|-----------------|---------------|---|
|        |          |               |                             |                             | Position<br>(a) | Inlet Dia-<br>meter | Position<br>(a') | Outlet Dia-<br>meter | Position<br>(b) | Type | Position<br>(c) | Width<br>(c') |   |
| #6     | 20       | 260           | 38                          | 27                          | 26.5            | Φ26                 | 6                | φ6                   | 69.5            | M10  | 130             | 10            | 110                                       |
| #7     | 22       | 290           | 42                          | 30                          | 26.5            | Φ26                 | 6                | φ6                   | 71              | M10  | 145             | 10            | 125                                       |
| #8     | 25       | 300           | 48                          | 34                          | 26.5            | Φ26                 | 6.5              | φ6                   | 73              | M10  | 150             | 10            | 130                                       |
| #9     | 28       | 340           | 51                          | 38                          | 30              | Φ26                 | 8.5              | φ6                   | 76              | M10  | 170             | 10            | 150                                       |
| #10    | 32       | 380           | 56                          | 41                          | 30              | Φ26                 | 9.5              | φ6                   | 79              | M10  | 190             | 10            | 170                                       |
| #13/14 | 40       | 520           | 70                          | 52                          | 30              | Φ26                 | 10               | φ6                   | 91              | M10  | 260             | 10            | 240                                       |



### Contact information

Tokyo Tekko Co., Ltd. Overseas Division  
 ADD : 11th Fl. Stage Bldg., 2-7-2 Fujimi, Chiyoda-ku, Tokyo 102-0071, Japan  
 TEL : +81-3-6272-3657 FAX : +81-3-5276-9713  
[http : //www.tokyotekko.co.jp](http://www.tokyotekko.co.jp)  
 E-mail : [ttk\\_overseas@tokyotekko.co.jp](mailto:ttk_overseas@tokyotekko.co.jp)