



JOINT

MECHANICAL ANCHORAGE

PLATE-NUT

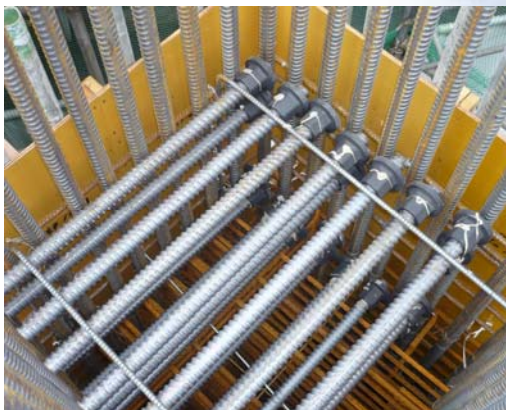
FOR REBAR TYPE - SS560:2016 Gr. 500&600 SIZE 20~40

PLATE-NUT method is a mechanical anchor method, replacement of L-shaped anchor or hook anchor. This realizes straight line anchorage and resolves rebar congestion, only installing PLATE-NUT to Neji-Tetsu-Con. No need to cut or bend rebar end. Easy to adjust length and installation position at site.



Features

1. The performance is equal to rebar anchor
2. Construction workability improves without complicated rebar anchor
3. Easy to adjust at site.



**PLATE-NUT METHOD
(BEAM)**



**PLATE-NUT METHOD
(SLAB)**



**TTK GROUT & TTK EPOXY
CONSTRUCTION TOOLS**

MECHANICAL ANCHORAGE PLATE-NUT

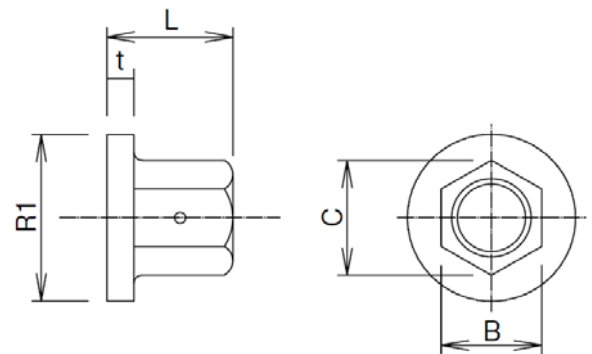
■ Mechanical Properties

Standard	Grade	0.2%Proof Stress (N/mm ²) min	Tensile Strength (N/mm ²) min	Elongation (%) min	Hardness (HB)
BS EN 1564	EN-GLS-1200-2	850 and over	1200 and over	2 and over	340-440

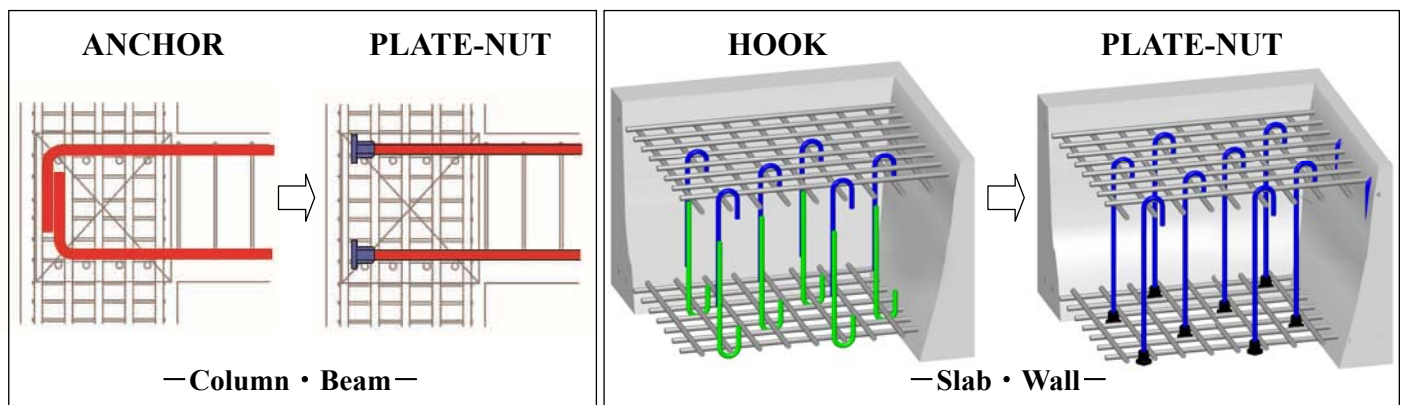
■ Dimensions

(Unit:mm)

BAR Size	Plate		Nut		Length
	Diameter	thickness	B	C	L
	R1	t			
20	50	7	32	36	37
25	65	9	41	46	47
32	80	11	50	54	62
40	100	16	63	69	77



■ Example



Contact information

Tokyo Tekko Co., Ltd. Overseas Division
 ADD : 11th Fl. Stage Bldg., 2-7-2 Fujimi, Chiyoda-ku, Tokyo 102-0071, Japan
 TEL : +81-3-6272-3657 FAX : +81-3-5276-9713
[http : //www.tokyotekko.co.jp](http://www.tokyotekko.co.jp)
 E-mail : ttk_overseas@tokyotekko.co.jp