



JOINT

THREADED REBAR JOINT

# ACE-JOINT

FOR REBAR TYPE - SS560:2016 Gr. 500&600 SIZE 20~40

ACE-JOINT is the mechanical splice for joining NEJI-TETSU-CON, TTK's threaded rebar. It is composed of one coupler and two lock-nuts and fixed by high-strength cement grout (TTK GROUT) .

ACE-JOINT is the best choice for column & beam prefabrication method. It also conforms to ISO15835.

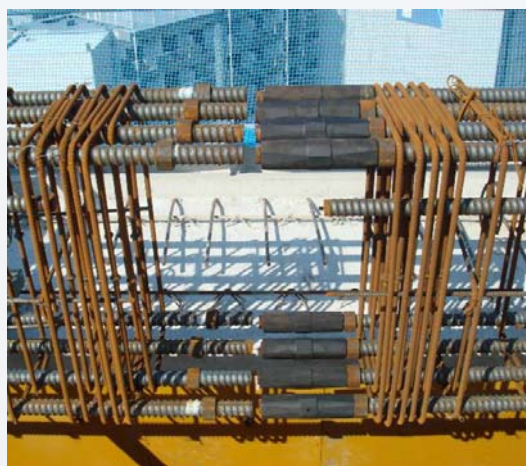


## Features

1. Mainly used for columns & beams
2. No need of employing skilled workers
3. Speedy & Easy installation.



**PREFABRICATION  
METHOD(COLUMN)**



**PREFABRICATION  
METHOD(BEAM)**



**TTK GROUT &  
CONSTRUCTION TOOLS**

# THREADED REBAR JOINT ACE-JOINT

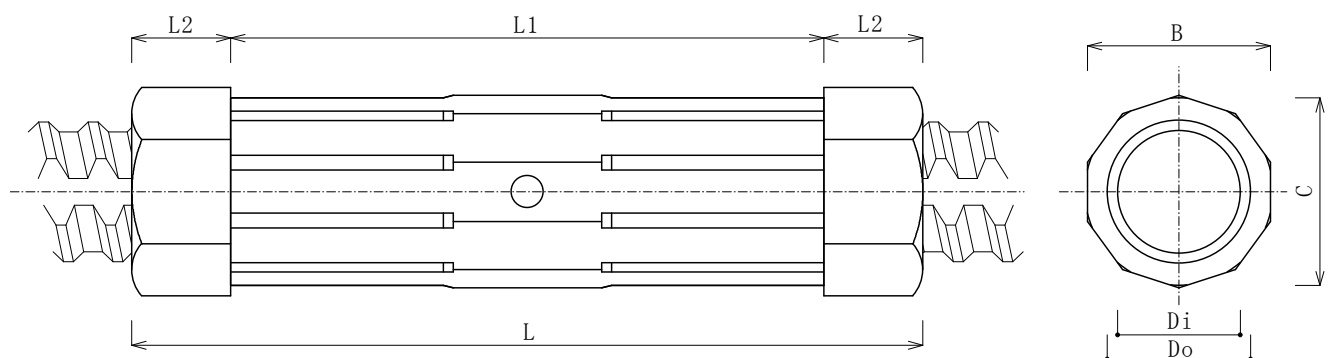
## ■ Mechanical Properties

Standard	Grade	0.2%Proof Stress (N/mm <sup>2</sup> ) min	Tensile Strength (N/mm <sup>2</sup> ) min	Elongation (%) min	Hardness (HB)
BS EN 1564	EN-GLS-1200-2	850 and over	1200 and over	2 and over	340-440

## ■ Dimensions

(Unit: mm)

BAR Size	Outside diameter of coupler		Length			Dimensions of thread		
			Coupler	Nut	Total	Pitch	Inside dia.	Root dia.
	B	C	L1	L2	L	P	Di	Do
20	31	32.6	110	20	150	8	19.6	23.1
25	40	42.1	140	20	180	10	24.8	29.0
32	50	52.6	190	30	250	13	31.4	36.6
40	64	67.3	220	30	280	16	39.0	45.4



## Contact information

Tokyo Tekko Co., Ltd. Overseas Division  
 ADD : 11th Fl. Stage Bldg., 2-7-2 Fujimi, Chiyoda-ku, Tokyo 102-0071, Japan  
 TEL : +81-3-6272-3657 FAX : +81-3-5276-9713  
[http : //www.tokyotekko.co.jp](http://www.tokyotekko.co.jp)  
 E-mail : [ttk\\_overseas@tokyotekko.co.jp](mailto:ttk_overseas@tokyotekko.co.jp)